

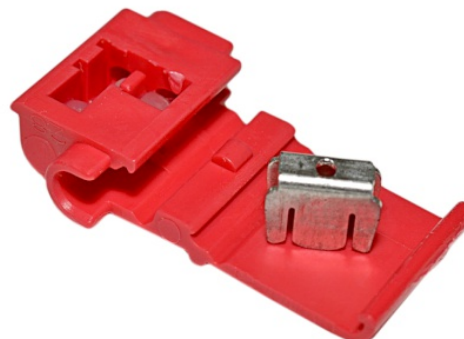
Brake Light Pro

Supplementary Manual



Using the red wire tap connector (BLP-ALL)

Take out the red wire tap and the blade (u-contact) from the package.



Place the bike's ground wire of the rear light assembly connector inside the run channel.



Close the side cover until latched.



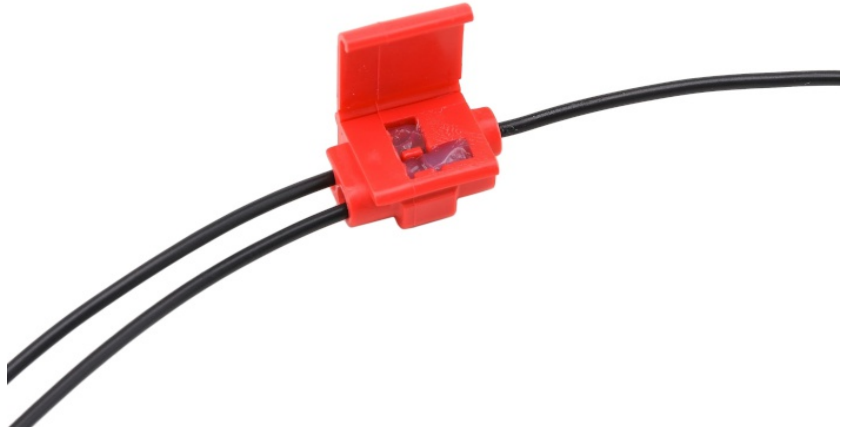
Brake Light Pro

Supplementary Manual



Using the red wire tap connector (BLP-ALL)

Insert the BLP Black wire completely to the red wire tap.



Insert the blade (u-contact).



Press it down by finger pressure.



Brake Light Pro

Supplementary Manual



Using the red wire tap connector (BLP-ALL)

Depress the blade (u-contact) fully with pliers.



Close the hinged top cover until latched.

