

Brake Light Pro Supplementary Manual



Mercedes ML-Class (W163) 1997-2005 (BLP-U01)

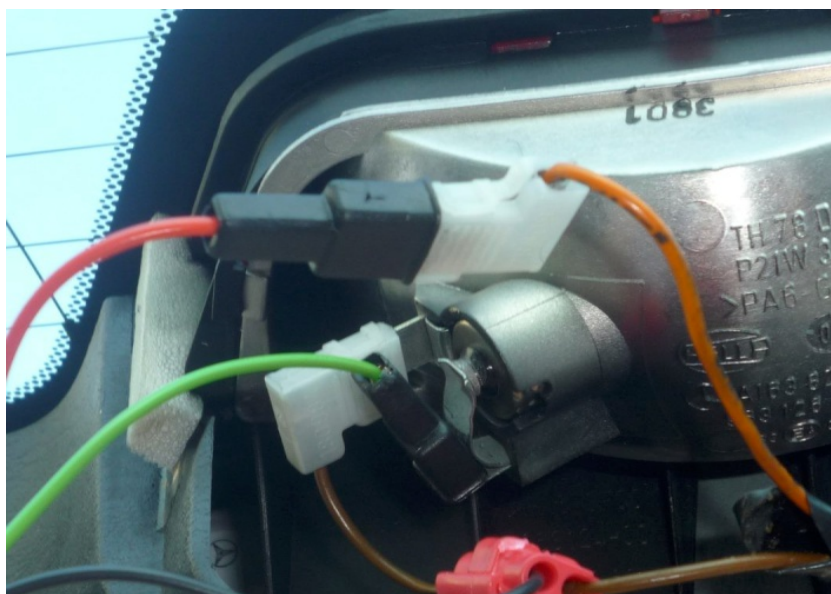
Remove the Black plastic cover of the third brake light.



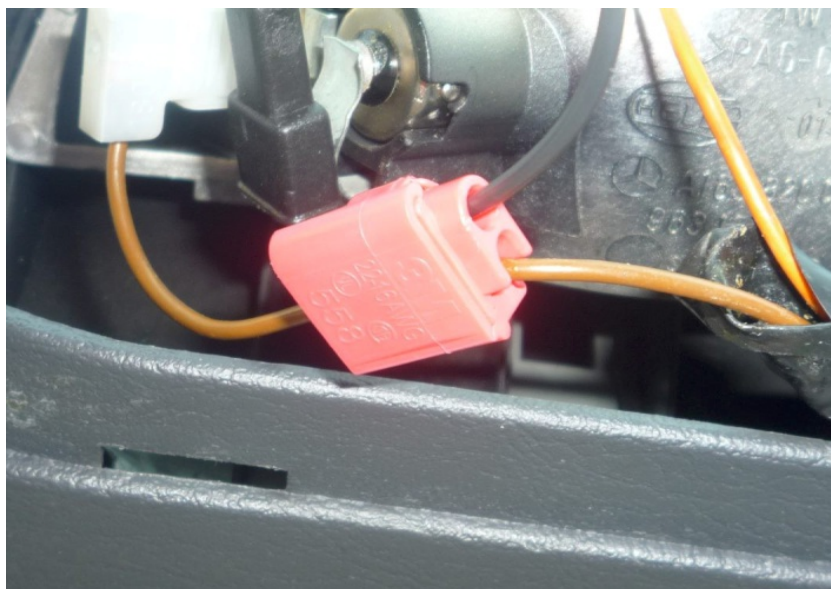
Cut the Orange wire or disconnect the terminal.

Connect the BLP Red wire to the Orange wire end, which is at the wiring harness side.

Connect the BLP Green wire to the Orange wire end, which goes to the third brake light.



Connect the BLP Black wire to the Brown wire.



Brake Light Pro Supplementary Manual



Mercedes ML-Class (W163) 1997-2005 (BLP-U01)

Typical position for the Brake Light Pro.

Secure the unit properly.

