

## Honda VFR1200X Crosstourer 2012- (OBD-H01)

Secure the bike on a stand.



Remove the seat.



Locate the diagnostic connector.

*(Red, 4-pole connector on the left side)*



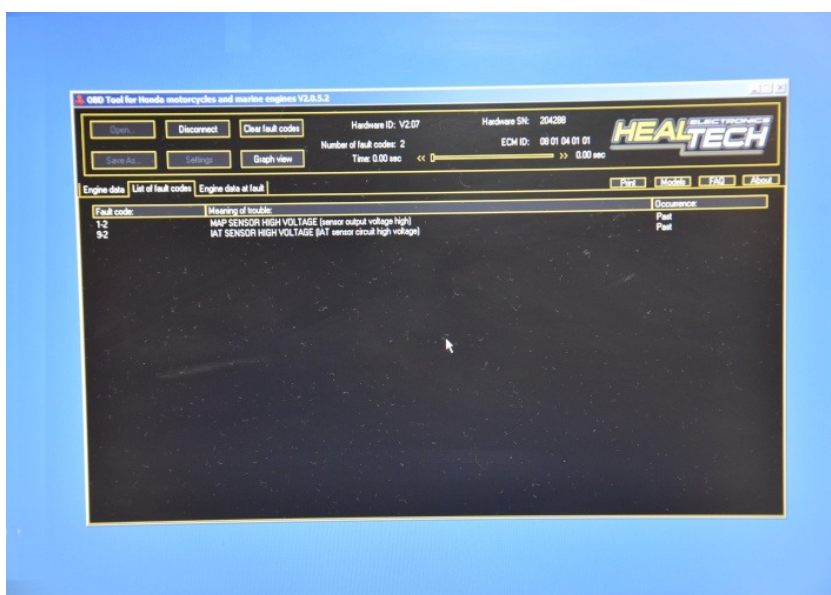
### Honda VFR1200X Crosstourer 2012- (OBD-H01)

Plug the OBD connector to the the diagnostic connector and the USB connector to the computer.



Turn the ignition key ON and click on the connect button in the program.

The faults shows on the screen.



To clear the faults:

First click on the Clear fault codes button and then to the Yes button.

