

Suzuki GSX-R600 2004- (OBD-S01)

Secure the bike on a stand.



Remove the seats and locate the diagnostic connector under the rear seat.

(White, 6-pole connector)



Plug the OBD connector to the the diagnostic connector and the USB connector to the computer.



OBD Tool

Supplementary Manual

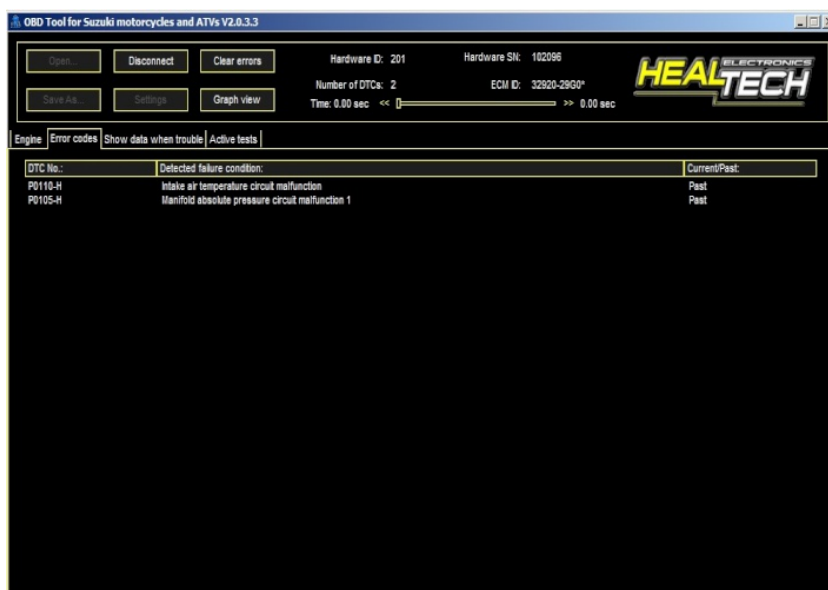


Suzuki GSX-R600 2004- (OBD-S01)

Turn the ignition key ON and click on the connect button in the program.



The faults shows on the screen.



To clear the faults:

First click on the Clear fault codes button and then to the Yes button.

