

Suzuki SFV650 2009-2015 (OBD-S01)

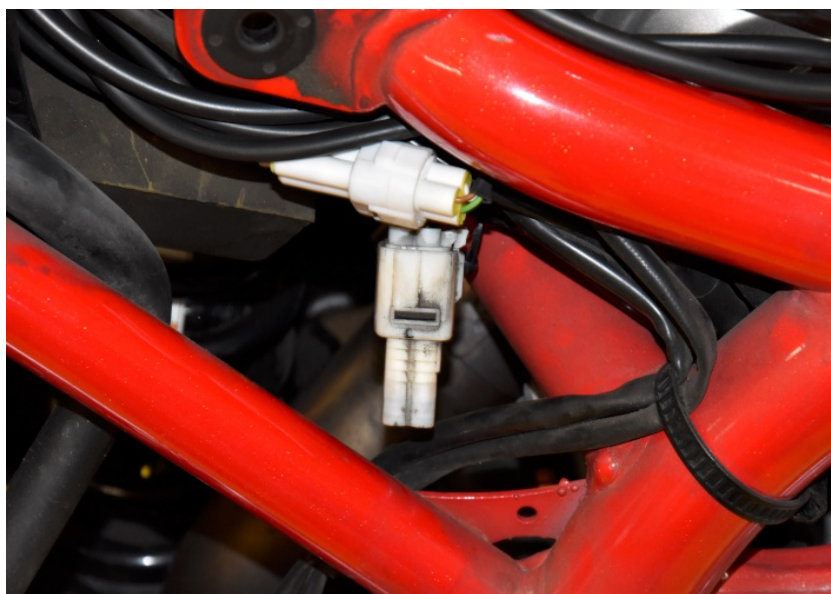
Secure the bike on a stand.



Remove the seat and the side covers.

Locate the diagnostic connector.

(White, 6-pole connector)



Plug the OBD connector to the the diagnostic connector and the USB connector to the computer.



OBD Tool

Supplementary Manual



Suzuki SFV650 2009-2015 (OBD-S01)

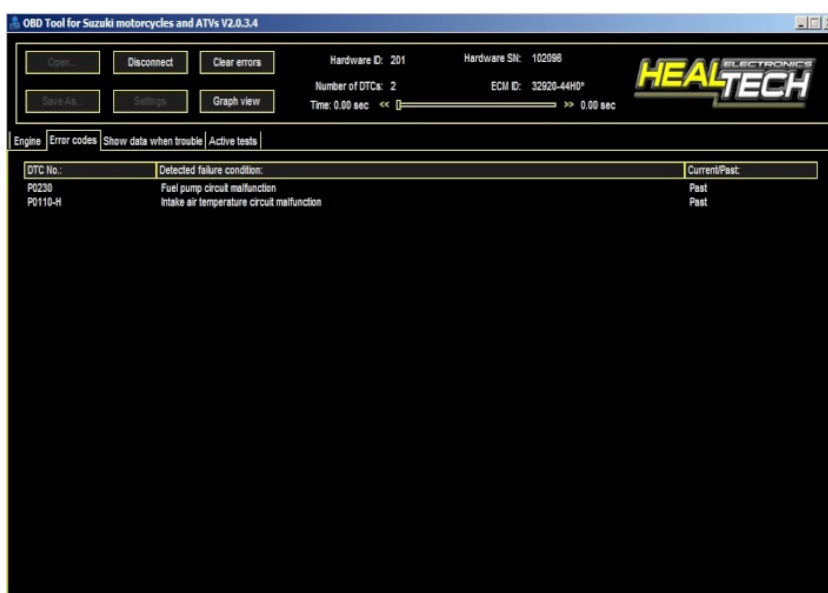
Turn the ignition key ON and click on the connect button in the program.



The faults shows on the screen.

To clear the faults:

First click on the Clear fault codes button and then to the Yes button.



Start the engine if you wish to inspect parameters while the engine is running.

