

Oxygen Sensor Eliminator Supplementary Manual



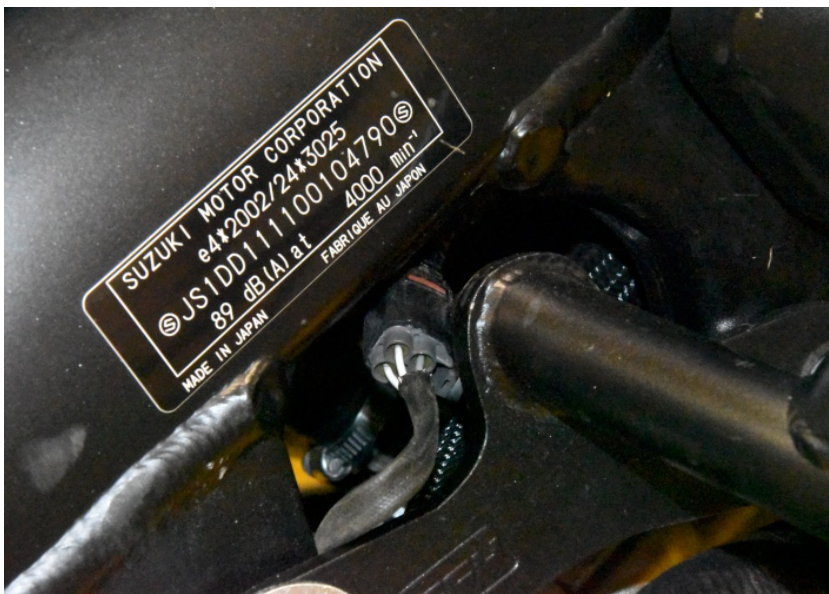
Suzuki DL1000 ABS TC 2014-2020 (OSE-19)

Secure the bike on a stand.



Locate and unplug the oxygen sensor connector under the fuel tank.

(Black, 4-pole connector)



Plug the OSE connector into the wiring harness connector.

Secure the unit properly.



Oxygen Sensor Eliminator Supplementary Manual



Suzuki DL1000 ABS TC 2014-2020 (OSE-19)

Remove the seat.

Locate and unplug the oxygen sensor connector under the seat.



Plug the OSE connector into the wiring harness connector.

Secure the unit properly.

