

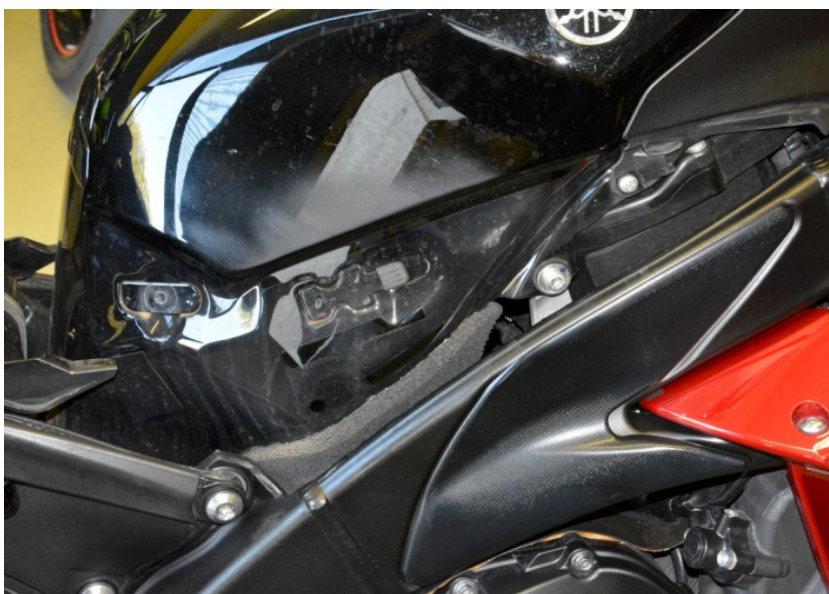
QuickShifter easy Supplementary Manual

Yamaha YZF-R1 2009-2014 (iQSE-1 + QSH-P4A)

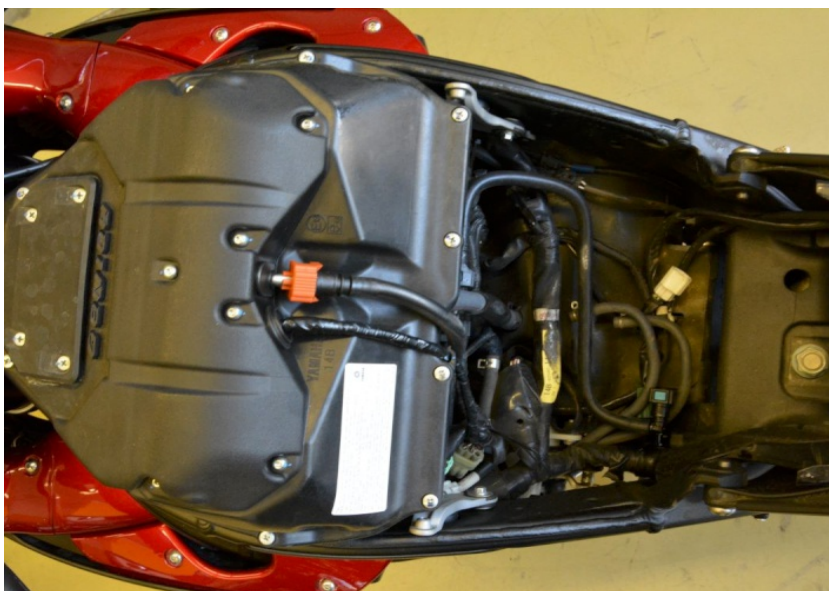
Remove the main seat.



Remove the black fuel tank covers.



Remove the fuel tank.



QuickShifter easy Supplementary Manual



Yamaha YZF-R1 2009-2014 (iQSE-1 + QSH-P4A)

Remove the airbox.

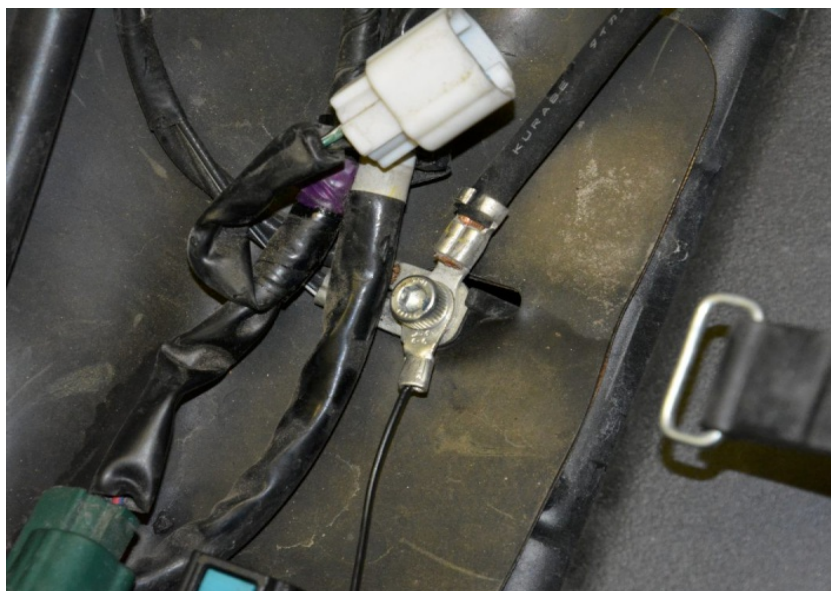


Plug the QSH connectors in-line with the ignition coil connectors.

(Black, 2-pole connectors below the airbox)



Connect the QSH Black wire terminal to the chassis ground.



QuickShifter easy Supplementary Manual



Yamaha YZF-R1 2009-2014 (iQSE-1 + QSH-P4A)

Mount the QSE sensor.

*(Replace the bolt with the one supplied.
Place the conical washers at the two sides
of the sensor like this: (O). Tighten the bolt
in this position by about 6 Nm. If you do not
have torque wrench, tighten the bolt until
the shift arm is tight on the gearbox shaft.)*



Typical position for the QuickShifter easy.

Secure the unit properly.

