

SpeedoHealer CAN

Supplementary Manual



BMW R1250GS ABS TC 2017-2021 (SH-CAN)

Secure the bike on a stand.



Remove the seats.

Remove the plastic cover from the fuel tank.

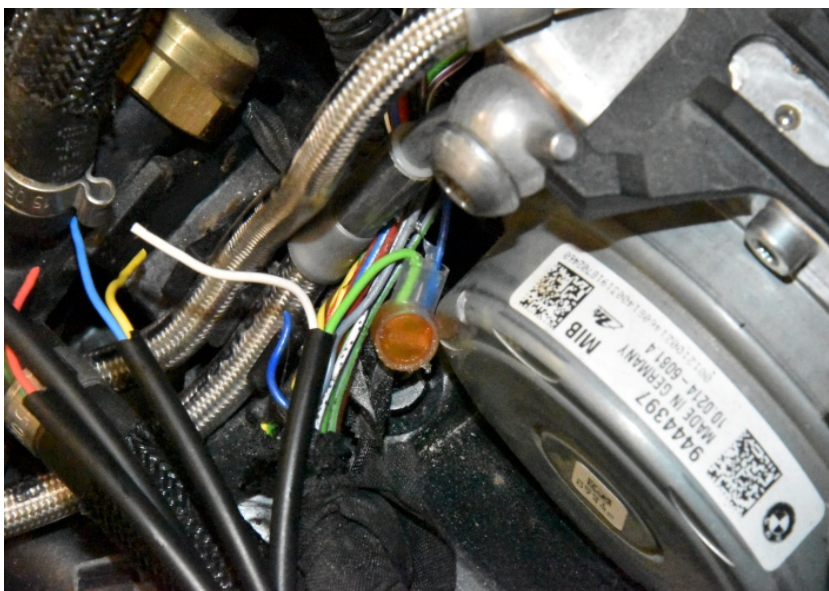
Remove the fuel tank.

Locate the ABS connector under the fuel tank.



Cut the Blue wire about 2,5cm (1") of the connector.

Connect the SH Green wire to the Blue wire end, which goes to the ABS module. Use a yellow butt connector.

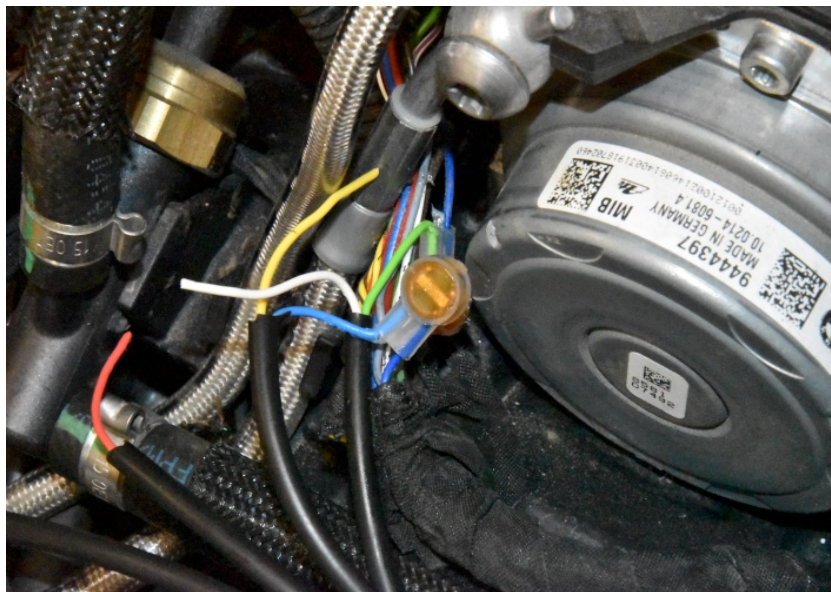


SpeedoHealer CAN Supplementary Manual



BMW R1250GS ABS TC 2017-2021 (SH-CAN)

Connect the SH Blue wire to the Blue wire end, which is at the wiring harness side. Use a yellow butt connector.



Cut the Grey wire about 2,5cm (1") of the connector.

Connect the SH White wire to the Grey wire end, which goes to the ABS module. Use a yellow butt connector.



Connect the SH Yellow wire to the Grey wire end, which is at the wiring harness side. Use a yellow butt connector.



SpeedoHealer CAN

Supplementary Manual



BMW R1250GS ABS TC 2017-2021 (SH-CAN)

Splice the SH Red wire to the Green wire of the ABS connector. Use a red wire tap connector.



Splice the SH Black wire to the Brown wire of the additional connector. Use a red wire tap connector.



Typical position for the SpeedoHealer CAN.

Secure the unit properly.

