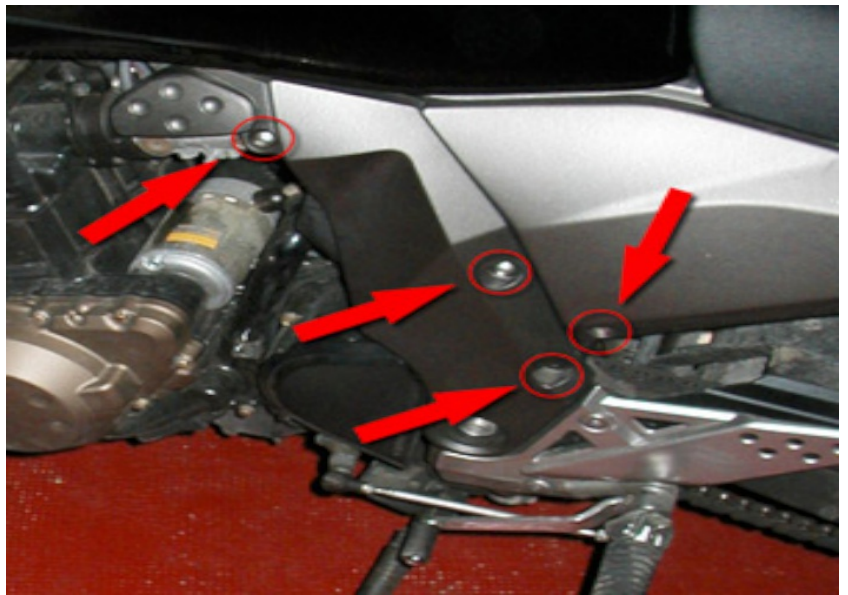


Kawasaki Z750 2004-2006 (SH-V4 + SH-K01)

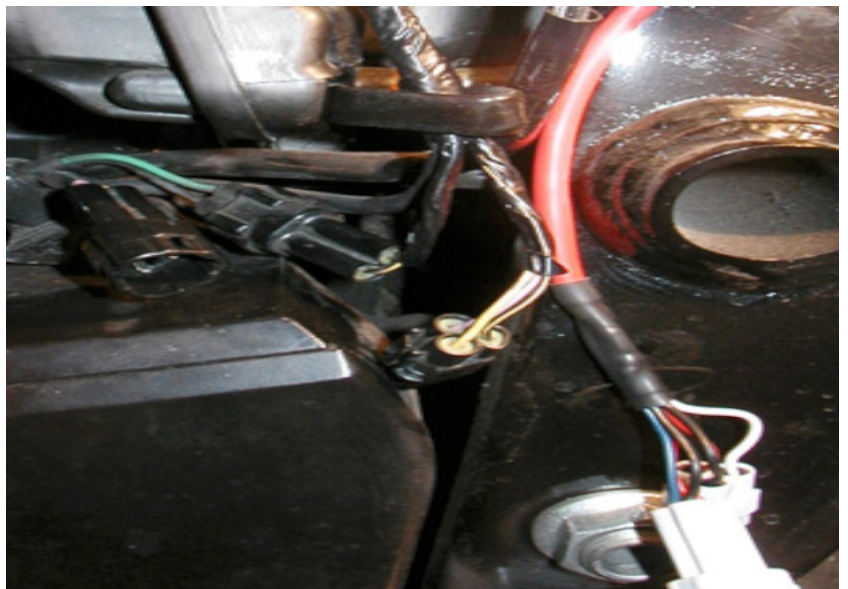
Secure the bike on a stand.



Remove the left side panel.



Locate the vehicle speed sensor connectors.



SpeedoHealer

Supplementary Manual



Kawasaki Z750 2004-2006 (SH-V4 + SH-K01)

Plug the SpeedoHealer connectors in-line with the vehicle speed sensor connectors.



Typical position for the SpeedoHealer.

Secure the unit properly.

