

Kawasaki ZX-14 2006-2011 (SH-V4 + SH-K01)

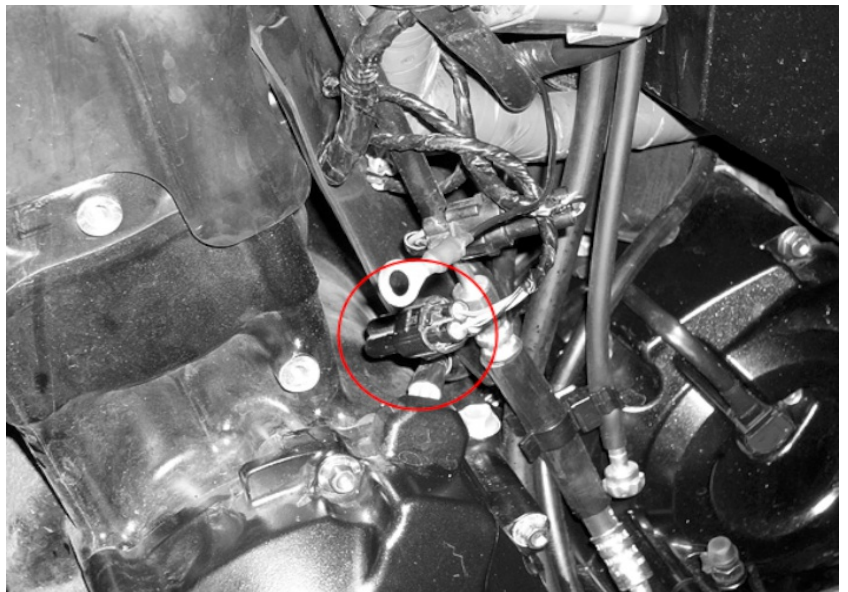
Secure the bike on a stand.



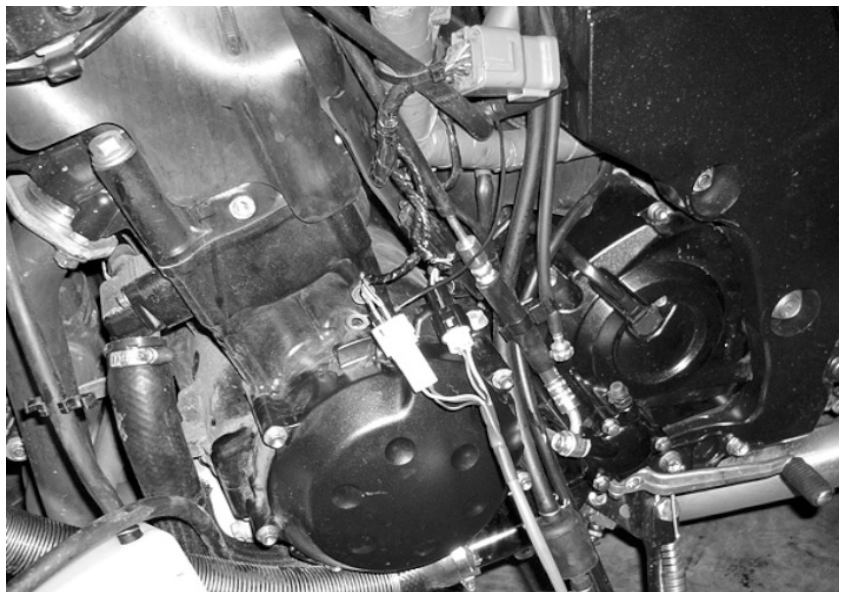
Remove the seat.

Remove the left side fairing.

Locate the speed sensor connector.



Plug the SpeedoHealer connectors in-line with the vehicle speed sensor connectors.



SpeedoHealer

Supplementary Manual



Kawasaki ZX-14 2006-2011 (SH-V4 + SH-K01)

Typical position for the SpeedoHealer.

Secure the unit properly.

